

# FPS-55-10

## Flat Deck Cargo Barge



### MAIN PARTICULARS

Design	Flat Deck Cargo Barge
Year Built	2010
Flag	Australia
Survey	AMSA 2A
Class	ABS A1
GRT	914t
Max DWT	2322t
Length	54.86m
Moulded Breadth	18.28m
Moulded Depth	3.65m
Draft	0.7m
Deck Capacity	12t / m2

### PERFORMANCE

Max Speed	N/A
Bollard Pull	N/A
Fuel Consumption	N/A

### CAPACITIES

Fuel	N/A
Portable Water	N/A

### DECK EQUIPMENT

Mooring System	4 x 5t Winches
Anchors	4 x 2.5t
Drum Capacity	N/A
Tugger Winch	N/A
Capstan	N/A
Stern Roller	N/A

### AUXILIARY

Generator	N/A
Supply System	N/A

### PROPULSION & MACHINERY

Main Engines	N/A
Power Rating	N/A
Gear Boxes	N/A
Propellers	N/A
Steering Gear	N/A

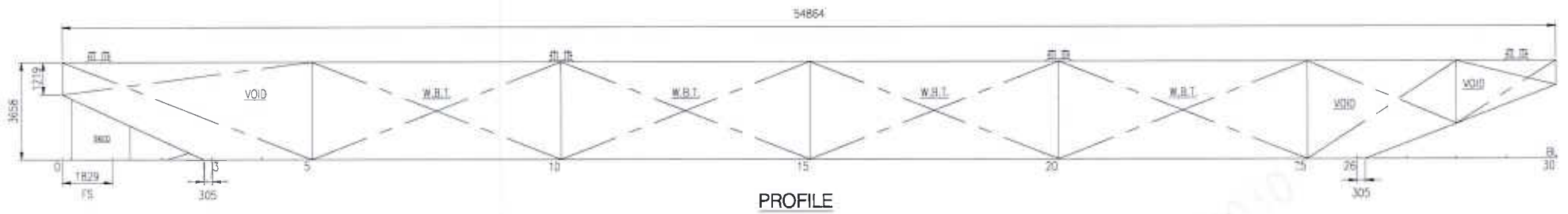
### ACCOMMODATION

Berths	N/A
Air-conditioning	N/A

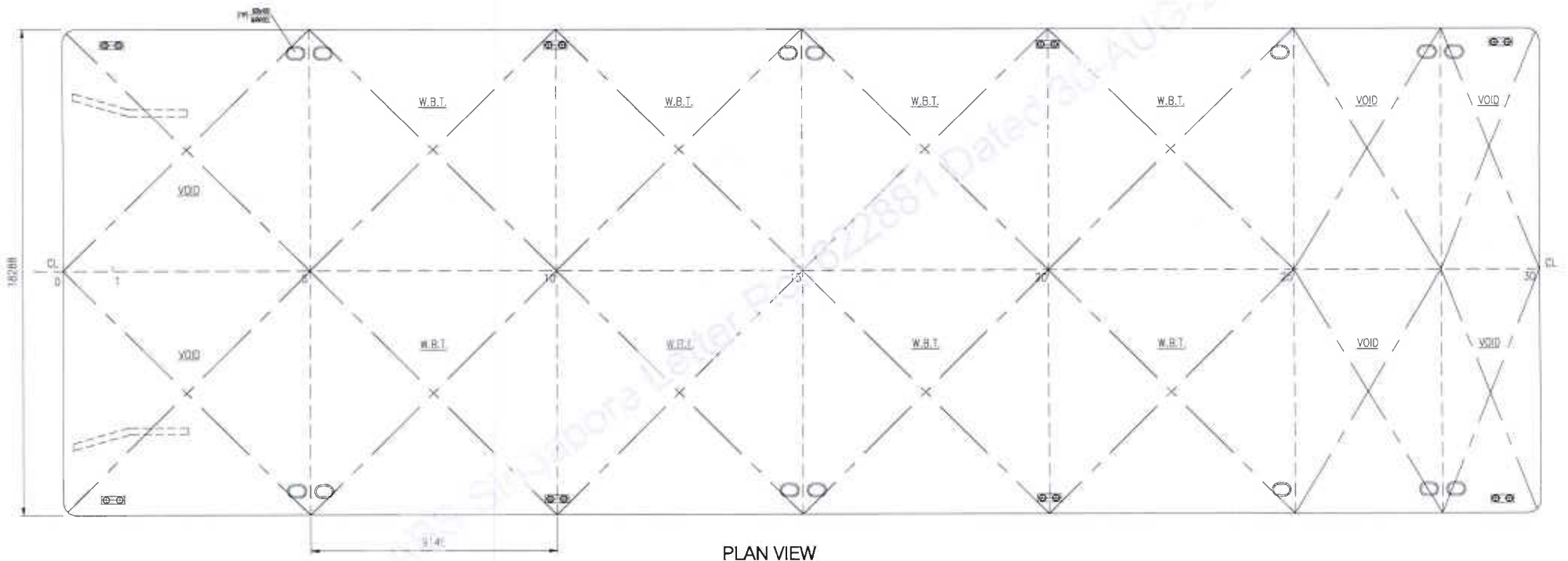


Gate 2, James Craig Road, Rozelle, New South Wales 2039  
PO Box 1771, Rozelle, New South Wales 2039  
T: +61 2 9563 8333 • F: +61 2 9563 8300 • E: admin@polarismarine.com.au

*The particulars are believed to be correct, but are not guaranteed. Particulars given are entirely without warranty on accuracy.*



PROFILE



PLAN VIEW

**MAIN PARTICULARS**

LENGTH (OA) 180' 0"

BREADTH 60' 0"

DEPTH 12' 0"

DECK LOADING 12 TON/M2

FILED FOR REFERENCE ONLY

12 DEC 10	C	ISSUED FOR CLASS APPROVAL	OK	LJ	EDH
14 JUL 10	B	ISSUED FOR DANCER APPROVAL	OK	LJ	EDH
09 JUL 10	A	ISSUED FOR DANCER EDWARDS	OK	LJ	EDH
DATE	REV. No.	DESCRIPTION	OWN.	CHKD.	APPD.
STATUS	A B C D E F		HULL NO.	01001/01000	
BUILDER	BAOSEN MARINE PTE LTD		CLASS	H0	
OWNER	QSA MARINE & LOGISTIC PTE LTD				
NAME	180' x 60' x 12' Barge				
TITLE	GENERAL ARRANGEMENT				
DESIGNER	BAB Offshore Pte. Ltd. 1 Tuas Ave. #02, Singapore 638020 Tel: (65) 68628170 Fax: (65) 68628178 Email: singapore@bab-offshore.com		DWG. NO.	SHP048-10001	
			SCALE	SIZE	DATE
			1:50	A1	VI 23AUG10