

PM South

Cargo Barge

www.polarismarine.com.au



MAIN PARTICULARS

Design	Cargo Barge
Year Built	2010
Flag	Australia
Survey	AMSA 2A
Class	DNV 1A1
GRT	928t
Max DWT	2100t
Length	54.86m
Moulded Breadth	18.28m
Moulded Depth	3.65m
Draft Lightship	0.7m
Deck Capacity	15t / m2

PERFORMANCE

Max Speed	N/A
Bollard Pull	N/A
Fuel Consumption	N/A

CAPACITIES

Fuel	N/A
Portable Water	N/A

DECK EQUIPMENT

Winch System	4 Point Mooring
Drum Capacity	400m each
Mooring Anchors	4x2.5T Flipper Deltas
Hungry Boards	N/A
Emergency Anchor	Fitted

AUXILIARY

Generator	N/A
Supply System	N/A

PROPULSION & MACHINERY

Main Engines	N/A
Power Rating	N/A
Gear Boxes	N/A
Propellers	N/A
Steering Gear	N/A

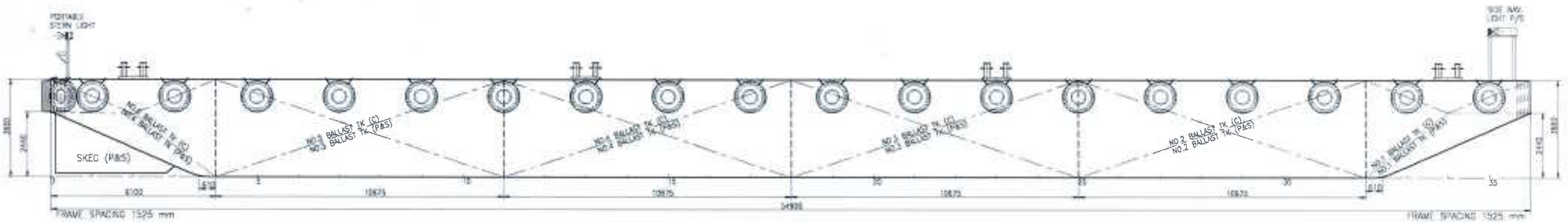
ACCOMMODATION

Berths	N/A
Air-conditioning	N/A

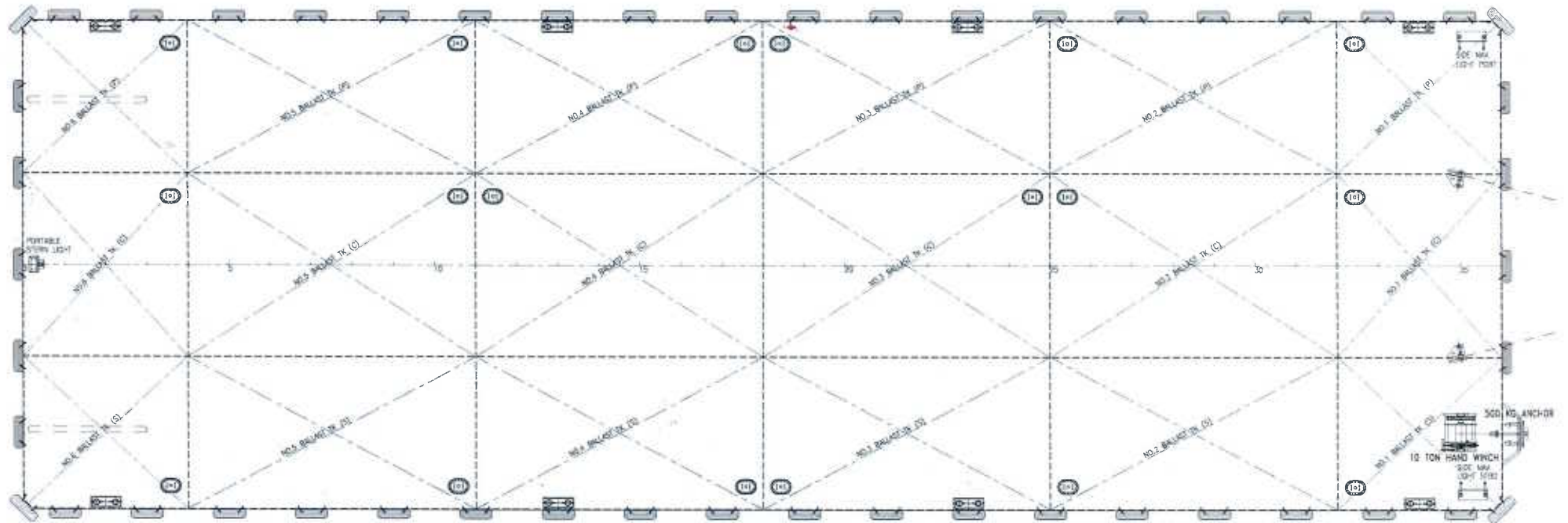


Gate 2, James Craig Road, Rozelle, New South Wales 2039
PO Box 1771, Rozelle, New South Wales 2039
T: +61 2 9563 8333 • F: +61 2 9563 8300 • E: admin@polarismarine.com.au

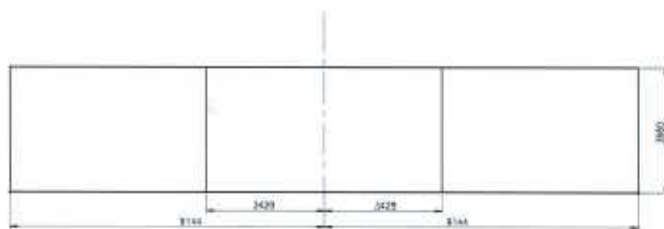
The particulars are believed to be correct, but are not guaranteed. Particulars given are entirely without warranty on accuracy.



PROFILE



MAIN DECK PLAN



MAIN DIMENSION

LENGTH O.A. (MLD HULL)	180.0 ft
BREADTH MLD.	60.0 ft
DEPTH MLD.	12.0 ft
DRAFT	9.64 ft
FRAME SPACING (FR. 0 - 36)	1525 MM
DECK LOAD	15.0 TON / M ²

JENJOSH MARINE DESIGN PTE LTD NO. 7030 North Bridge Road, #03-11 Ang Mo Kio Ave 5 SINGAPORE 069603 Tel: 65 6322 0000 Fax: 65 6322 0002 Email: info@jenjosh.com	
QSA HAGEN MARINE PTE LTD 100, Singapore 069271 Tel: 65 6276 0000 Fax: 65 6276 0001 Email: info@hagen.com	
Project: 180x60x12' DECK CARGO / BALLASTIBLE BARGE	
Title: GENERAL ARRANGEMENT	
Drawn: SS	Proj. No.: J27183
Checked: SS	Scale: 1:10
	Date: 11/06/2013